

REINFORCING PER STRUCTURAL ENGINEER

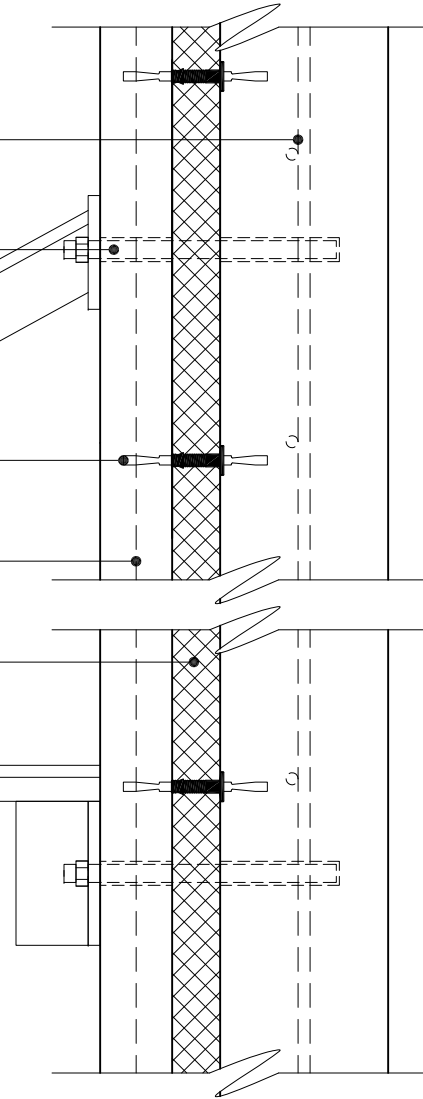
TYPE 304SS 3/8" Ø ALL-THREAD ROD  
HILTI RE500 ADHESIVE EPOXY

CANOPY

GFRP WYTHE TIE AS PROVIDED WITH  
SYSTEM NC (STRUCTURALLY NON-COMPOSITE)

WELDED WIRE FABRIC

INSULATION AS PROVIDED WITH  
THERMOMASS



CONSTRUCTION DOCUMENTS BASED ON DETAILS PROVIDED BY THERMOMASS WILL VARY ACCORDING TO PROJECT DEMANDS. REFER TO THE PROJECT ARCHITECT OR ENGINEER FOR SPECIFIC DETAILS.

COPYRIGHT 2010 THERMOMASS. ALL RIGHTS RESERVED.

THIS DRAWING IS THE EXCLUSIVE PROPERTY OF THERMOMASS. ANY REPRODUCTION, COPY, OR OTHER UNAUTHORIZED USE OF THIS DRAWING, INCLUDING BUT NOT LIMITED TO USE OF THIS DRAWING IN THE INSTALLATION OF A NON-THERMOMASS INSULATION SYSTEM, IS A VIOLATION OF U.S. COPYRIGHT LAWS AND OTHER RIGHTS OF THERMOMASS.

Thermomass  
1000 Technology Drive  
Boone, IA 50036  
Ph: (515) 433-6075; Fax: (515) 433-6088

PROJECT: GENERAL DETAIL FILE - WEB	
DETAIL: CANOPY CONNECTION - SLOTTED	
SCALE: 1 1/2" = 1'-0"	
DRAWN BY: TJB	CHECKED BY: DXN
DATE: 12/16/10	REVISION: NA

CONFIGURATION: 3" / 2" / 7"
PROJECT NO.: NA
DRWG. NO.: NCA-CP12

**thermomass**<sup>®</sup>  
SYSTEM NC