

INSULATION AS PROVIDED WITH THERMOMASS

GFRP WYTHE TIE AS PROVIDED WITH SYSTEM NC (STRUCTURALLY NON-COMPOSITE)

REINFORCING PER STRUCTURAL ENGINEER

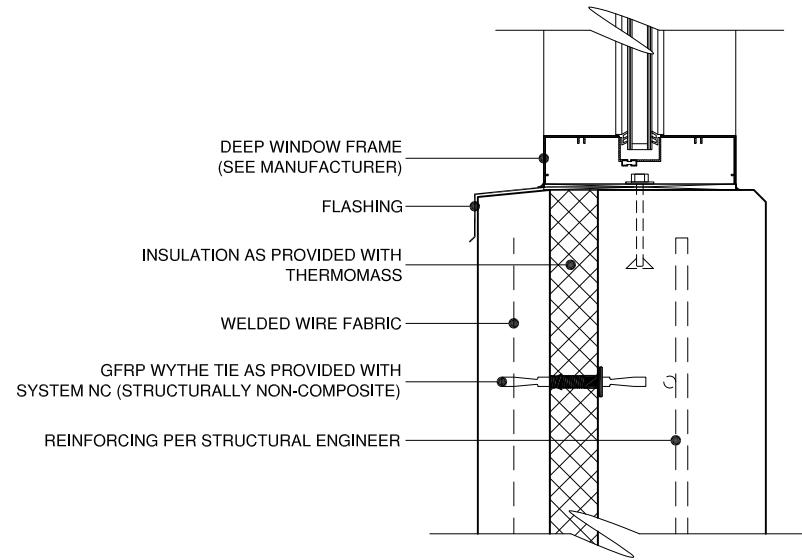
WELDED WIRE FABRIC

CAULK AS NEEDED

ISOLATION LAYER

DEEP WINDOW FRAME (SEE MANUFACTURER)

HEAD DETAIL - JAMB SIMILAR



DEEP WINDOW FRAME (SEE MANUFACTURER)

FLASHING

INSULATION AS PROVIDED WITH THERMOMASS

WELDED WIRE FABRIC

GFRP WYTHE TIE AS PROVIDED WITH SYSTEM NC (STRUCTURALLY NON-COMPOSITE)

REINFORCING PER STRUCTURAL ENGINEER

SILL DETAIL

CONSTRUCTION DOCUMENTS BASED ON DETAILS PROVIDED BY THERMOMASS WILL VARY ACCORDING TO PROJECT DEMANDS. REFER TO THE PROJECT ARCHITECT OR ENGINEER FOR SPECIFIC DETAILS.

COPYRIGHT 2010 THERMOMASS. ALL RIGHTS RESERVED.

THIS DRAWING IS THE EXCLUSIVE PROPERTY OF THERMOMASS. ANY REPRODUCTION, COPY, OR OTHER UNAUTHORIZED USE OF THIS DRAWING, INCLUDING BUT NOT LIMITED TO USE OF THIS DRAWING IN THE INSTALLATION OF A NON-THERMOMASS INSULATION SYSTEM, IS A VIOLATION OF U.S. COPYRIGHT LAWS AND OTHER RIGHTS OF THERMOMASS.

Thermomass
1000 Technology Drive
Boone, IA 50036
Ph: (515) 433-6075; Fax: (515) 433-6088

PROJECT: GENERAL DETAIL FILE - WEB	
DETAIL: WINDOW DETAIL - DEEP FRAME	
SCALE: 1 1/2" = 1'-0"	
DRAWN BY: TJB	CHECKED BY: DXN
DATE: 12/16/10	REVISION: NA

CONFIGURATION: 3"1/2"17"
PROJECT NO.: NA
DRWG. NO.: NCA-W15

thermomass[®]
SYSTEM NC